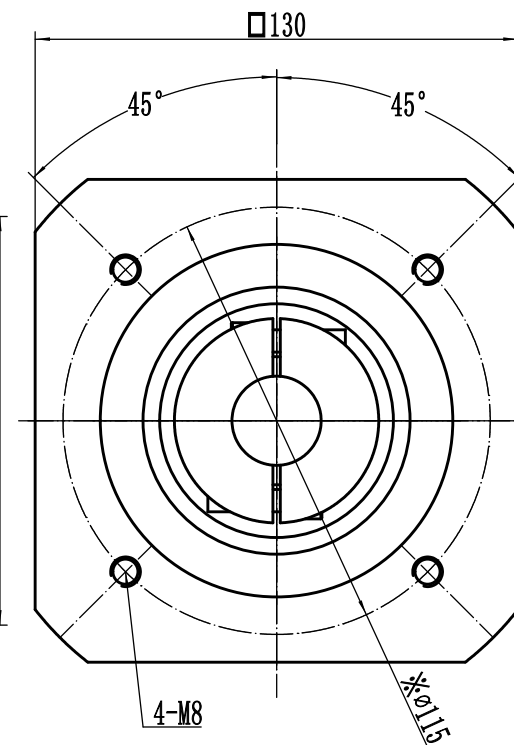
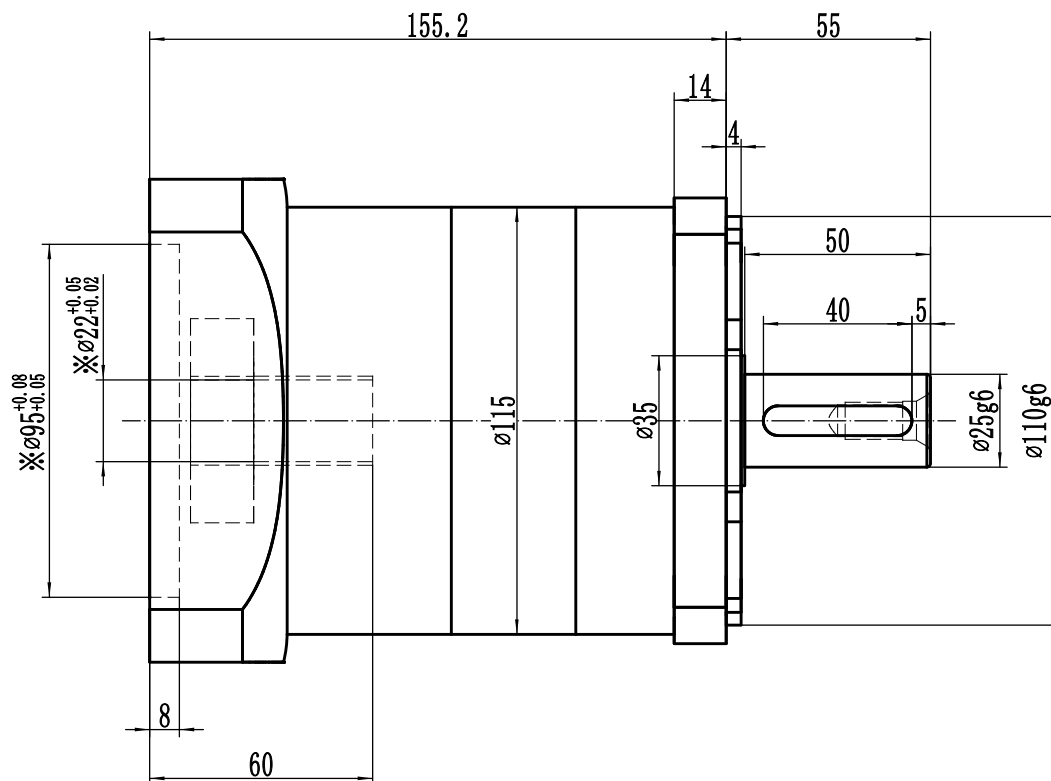





A

Input



Ratio	3: 1	4: 1	5: 1	6: 1	7: 1	8: 1	10: 1	未注公差										WPF115单段减速机				WPF115-L1shape drawing				
Nominal Output torque	125Nm	230Nm	260Nm	90Nm	90Nm	70Nm	70Nm	0.5-3	±0.1											视角						
Allowable Axle force	1000N	IP level	IP65	Lubrication	Synthetic Lubrication oils			3-6	±0.1											阶段标记		重量	比例			
Allowable radial force	1240N	Service life	20000h*	Torsional rigidity	11Nm/arcmin			6-30	±0.2	标记	处数	分区	更改文件号	签名	年、月、日											
Nominal input speed	3500rpm	Mounting position	Any directions	Efficiency	96%			30-120	±0.3	设计			标准化											1:1		
Backlash	P2≤10arcmin							120-400	±0.5	校对			批准													
										审核										共		张	第	张		
Noise	≤68dB	Operating Temp	-10℃~80℃							工艺														2018-9-7		
								行星底座-WPF115-DZYT-X1-223-001-(50270338)A 轴套-Φ22xΦ24-(50310011)C																		

\* 连续使用寿命 10000h