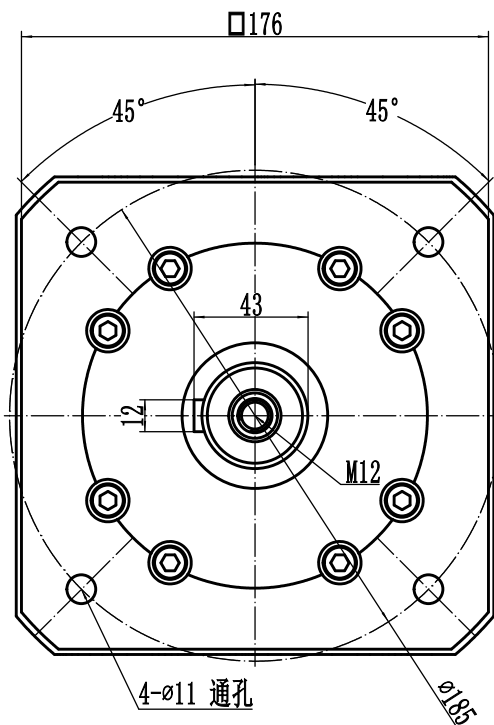


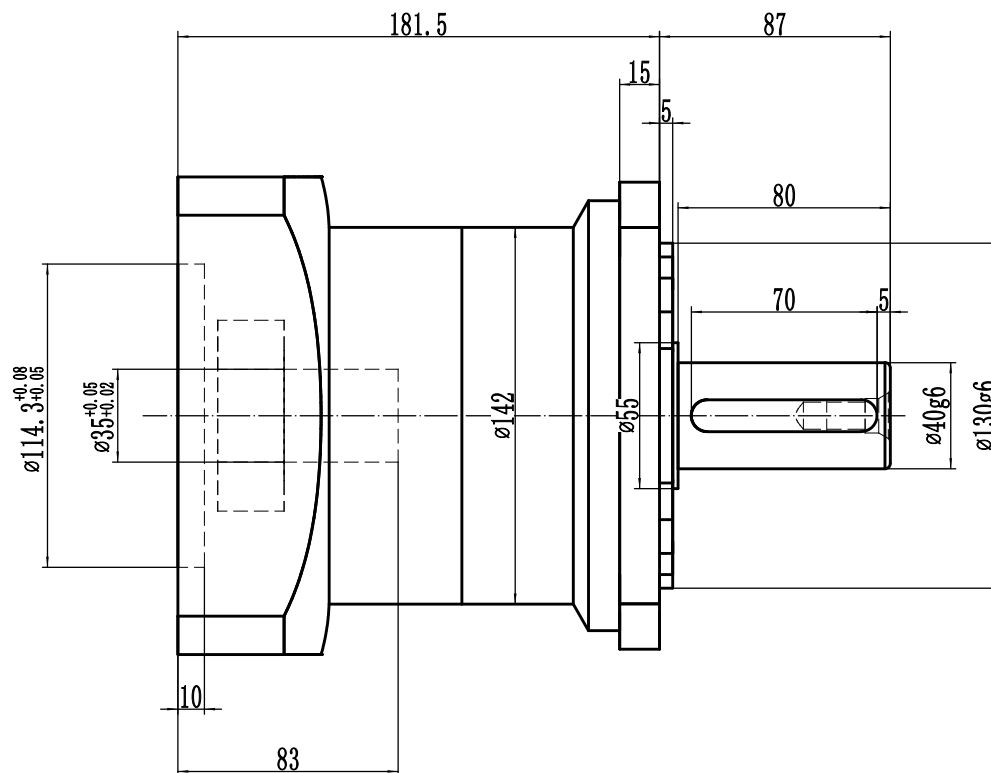
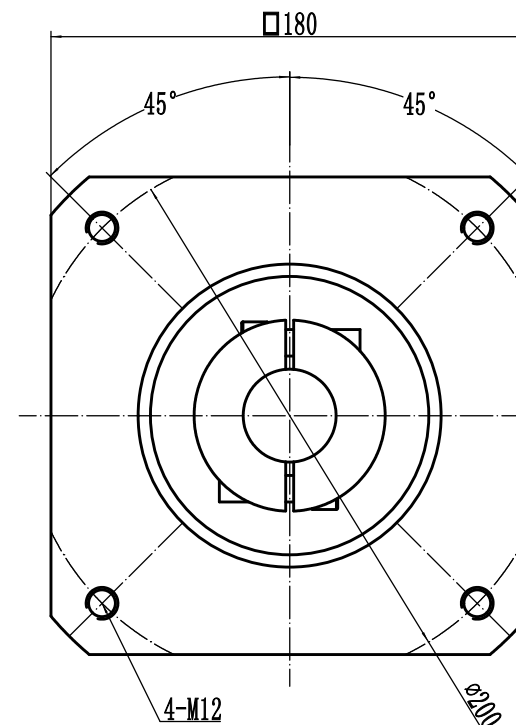
版本



A

Output



Input



Ratio		3: 1	4: 1	5: 1	6: 1	7: 1	8: 1	10: 1	未注公差							WPF142单段减速机			WPF142-L1(3KW) shape drawing		
Nominal Output torque		290Nm	460Nm	550Nm	340Nm	340Nm	210Nm	210Nm	0.5-3	±0.1											
									3-6	±0.1											
Allowable axial force	4500N	IP level	IP65	Lubricating system	Synthetic Lubrication grease	E21830			6-30	±0.2	标记	处数	分区	更改文件号	签名	年、月、日	视角				
Allowable radial force	4800N	Service life	20000h*	Torsional rigidity	55Nm/arcmin				30-120	±0.3	设计				标准化				阶段标记	重量	比例
Nominal input speed	2500rpm	Mounting position	Any direction	Efficiency	96%				120-400	±0.5	校对				批准						1:1
Backlash	P2≤10arcmin										审核										
Noise	≤75dB	Operating Temp	-10℃~80℃								工艺									共	张
																				2018-9-7	

* service life 10000h