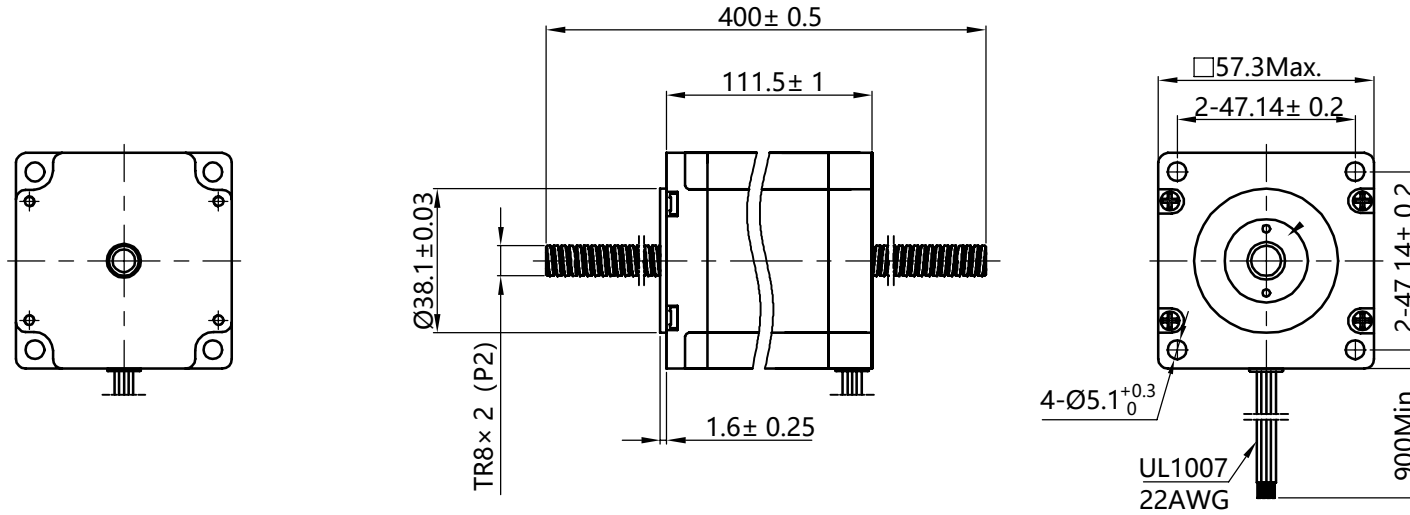
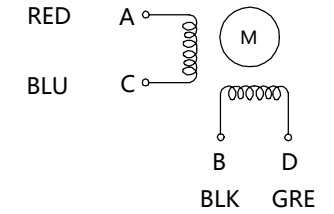


HYBRID STEPPING MOTOR SPECIFICATION

(DIMENSIONS) unit=mm



Wiring Diagram



Exciting Sequence vs. Direction of Rotation

STEP	A	B	C	D	
1	+	+	-	-	↓ CW ↑ CCW
2	-	+	+	-	
3	-	-	+	+	
4	+	-	-	+	

Clockwise view from mounting side

1、 Number of Phase	2				
2、 Step Angle	1.8° deg.				
3、 Rated Voltage	4.8 V				
4、 Rated Current/Phase	3 A (Peak Value)				
5、 Phase Resistance	1.6 Ω ± 10%(20°C)				
6、 Phase Inductance	7.5 mH ± 20%(1kHz 1V RMS)	版本 REV.	REVISION RECORD	日期 DATE	
7、 Holding Torque	28 Kg.cm	设计 DESIGN	YY 2021.07.02		
8、 Insulation Class	B (130°) ;温升 80K Max.	标准化 STANDARD			www.kalatec.com.br
9、 Weight	1.5 kg	工艺 TECHNOLOGY			
Specifications		审核 CHECK			
		批准 APPROVE			
Comment					

品名 TITLE	STEPPING MOTOR			
图号 DWG.NO.	HT23-402.8-3004TL2-40			
材料 MATERIAL	变更标识 ECN SIGN	* SIZE	A4	
版本 REV.	A	比例 SCALE	1:2	页 SHEET
				1 of 1