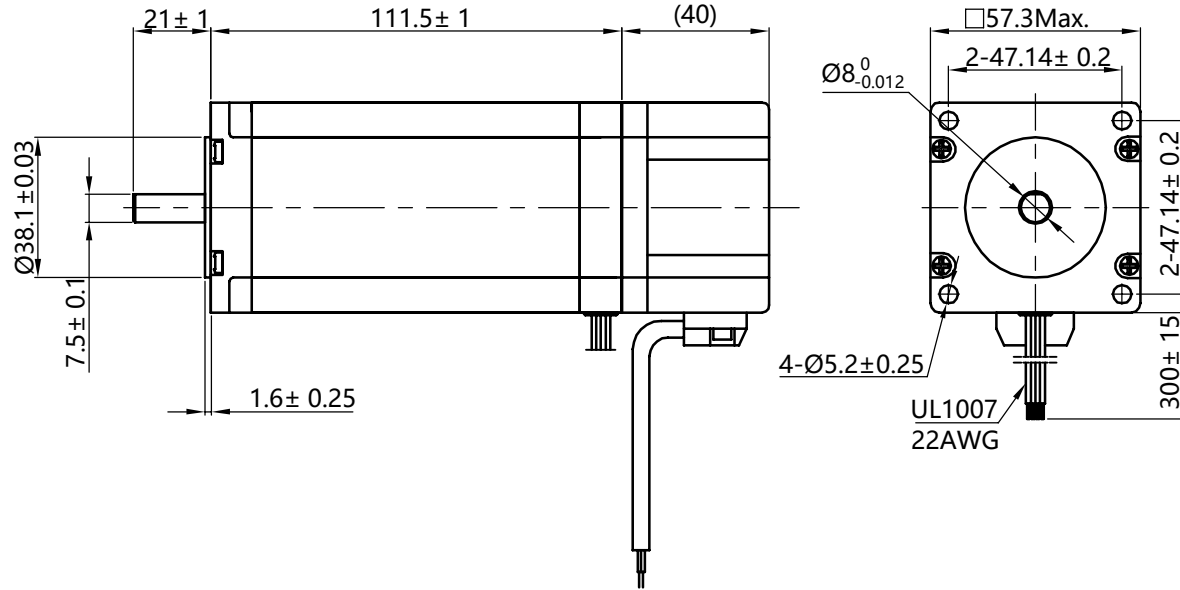
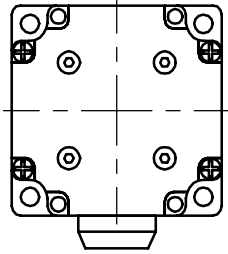
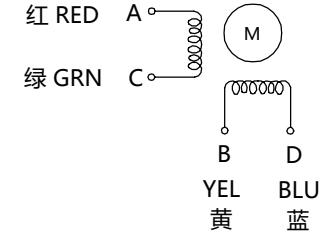


HYBRID STEPPING MOTOR SPECIFICATION

(DIMENSIONS) unit=mm



Wiring Diagram



励磁顺序vs.旋转方向

Exciting Sequence vs. Direction of Rotation

STEP	A	B	C	D	
1	+	+	-	-	↓ CW ↑ CCW
2	-	+	+	-	
3	-	-	+	+	
4	+	-	-	+	

从安装面看为顺时针方向

Clockwise view from mouting side

1、Number of Phase	2	FREIO 24V 2N.m	版本 REV.	REVISION RECORD	日期 DATE
2、Step Angle	1.8° deg.		设计 DESIGN	YY 2020.07.09	www.kalatec.com.br
3、Rated Voltage	4.8 V		标准化 STANDARD		
4、Rated Current/Phase	3 A (峰值 Peak Value)		工艺 TECHNOLOGY		
5、Phase Resistance	1.6 Ω ± 10%(20°C)		审核 CHECK		
6、Phase Inductance	6.8 mH± 20%(1kHz 1V RMS)		批准 APPROVE		Specification
7、Holding Torque	30 Kg.cm				
8、Insulation Class	B (130°) ;温升 80K Max.				
9、Weight	1.5 kg				
Specifications		备注 Comment			



品名 TITLE	STEPPING MOTOR			
图号 DWG.NO.	KTC-HT23-402.8-BRAKE			
材料 MATERIAL				SIZE A4
版本 REV.	A	比例 SCALE	1:2	页 SHEET 1 of 1