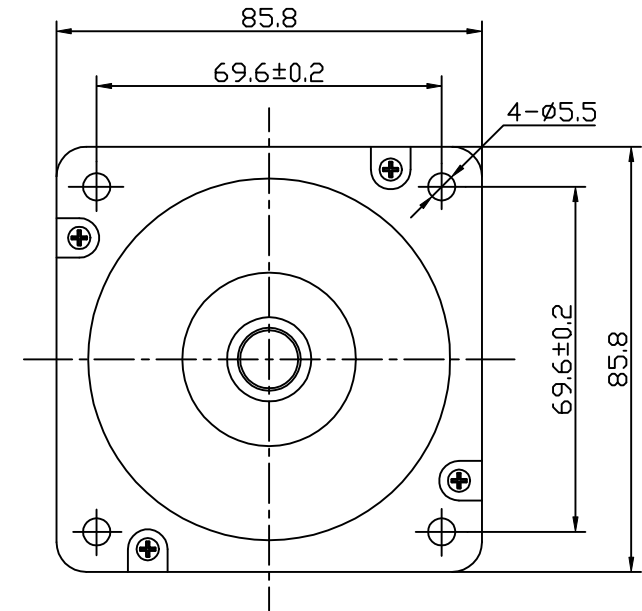
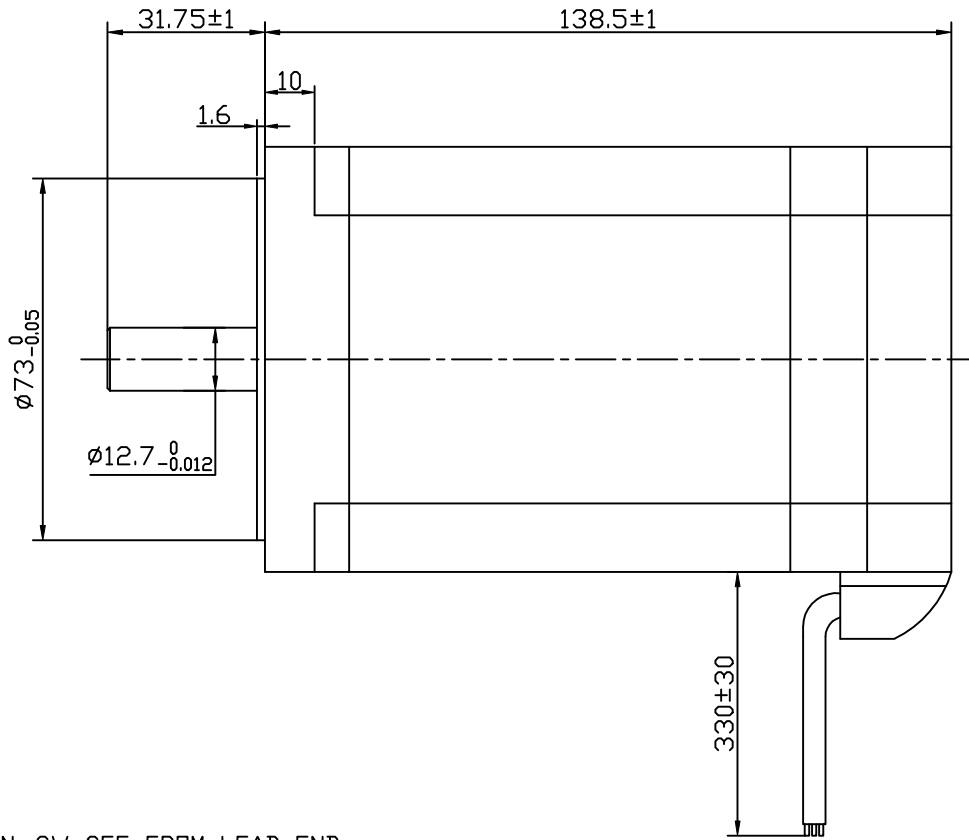
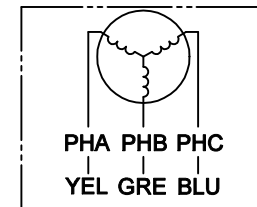
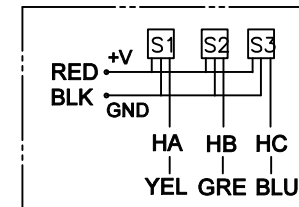


Dimension:
Unit=mm



Connection diagram:



Hall sensor cable
Note: hall sensor power supply
voltage +5 to +20VDC

Wiring cable

ROTATION: CW SEE FROM LEAD END

MANUFACTUER MODEL	86BLS125-X002
NUMBER OF POLES	8
PHASE TO PHASERESISTANCE	0.13 OHMS
NOMINAL VOLTAGE	48 VDC
NO LOAD SPEED	3700±10% RPM
NO LOAD CURRENT	2.8 Amps Max.
RATED TORQUE	2.1 N-m
RATED SPEED	3000±10% RPM
OUTPUT POWER	660 W
BACK EMF CONSTANT	13 V/kRPM
TORQUE CONSTANT	0.124 N-m/A
INSULATION CLASS	B

ELECTRICAL CONNECTION TABLE			
+5V	RED	UL1007 26 AWG	
HALL U	YEL		
HALL V	GRE	AF 1.5	
HALL W	BLU		
GND	GND		
PHASE U	YEL		
PHASE V	GRE		
PHASE W	BLU		

REV.	QTY.	No.	SIG.	DATE
DESIGN			STD.	
CHECK				
PROC.			APPR.	

Title:		
Specification		
CLS.MAK	WEIGHT	SCALE
PAGE: 1/1		

KTC-86BLS125-J
KTC-J-BLDC700-48