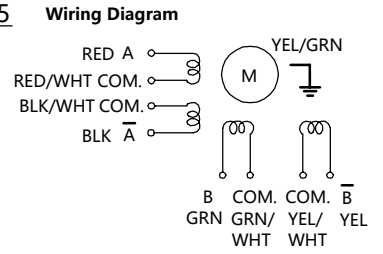
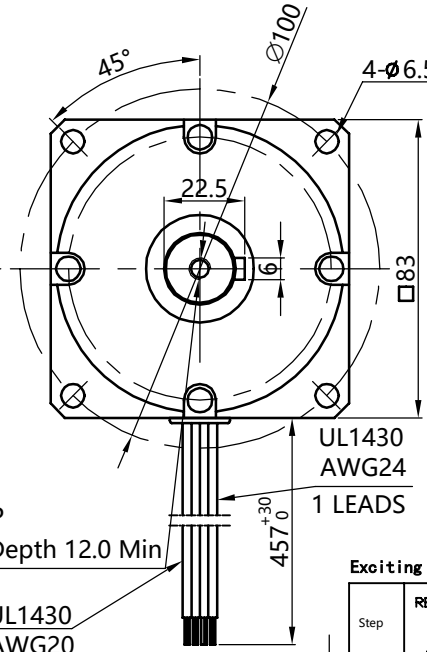
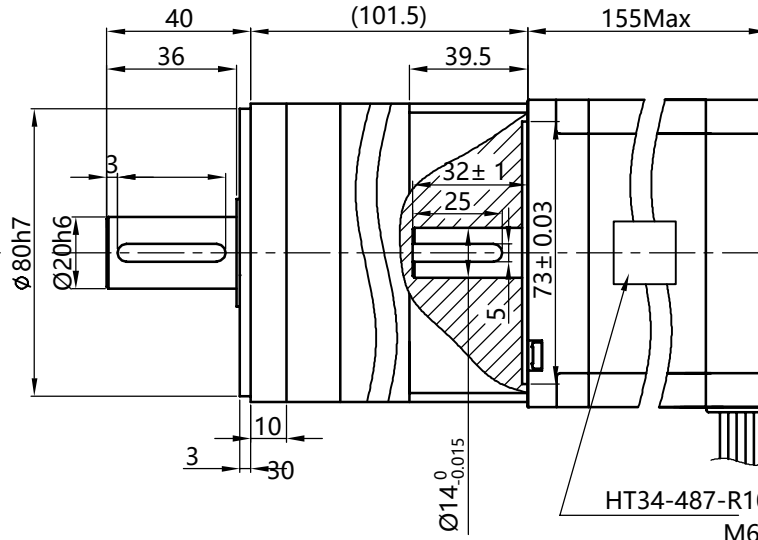
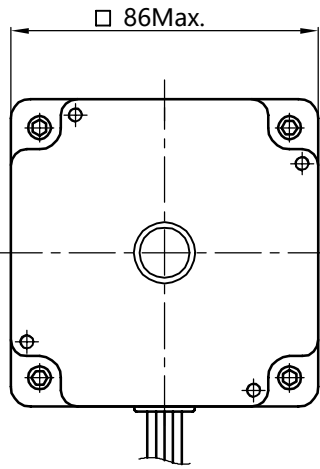


HYBRID STEPPING MOTOR SPECIFICATION

(DIMENSIONS) unit=mm



UL1430
AWG20
8 LEADS

Exciting Sequence vs. Direction of Rotation

Step	RED A	GRN B	BLK A̅	YEL B̅	RED/WHT BLK/WHT COM.	GRN/WHT YEL/WHT COM.
0	ON	ON			+V	
1		ON			+V	
2			ON	ON	+V	
3	ON			ON	+V	
4	ON	ON			+V	

Clockwise view from mounting side

1 Number of Phase	2
2, Step Angle	1.8° deg.
3, Rated Voltage	3.47 V
4, Rated Current/Phase	6.3 A (Peak Value)
5, Phase Resistance	0.55 Ω ± 0.1(20°C)
6, Phase Inductance	3 mH± 20%(1kHz 1V RMS)
7, Holding Torque	120 kg.cm
8, Insulation Class	B (130°) ;温升 80K Max.
9, Weight	5.6 kg
10, Return clearance	≤ 15arcmin

1. 10:1 (PLF80)



REV	REVISION RECORD	
DESIGN		www.kalatec.com.br
STRD	2020.10.26	
TECHNOLOGY		Specification

TITLE	STEPPING MOTOR		
DWG. NO.	KTC-HT34-487-R10P		
	SIZE	A4	
	A	比例 SCALE 1:2	页 SHEET 1 of 1