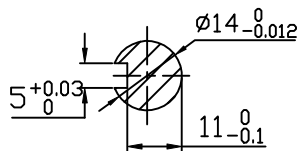
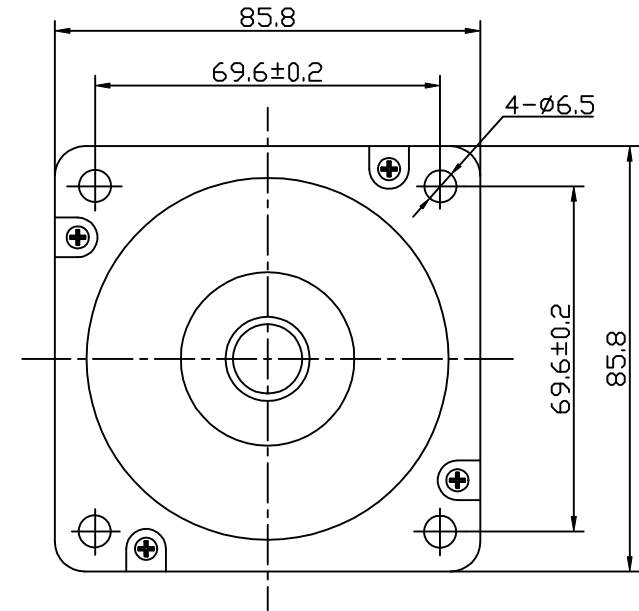
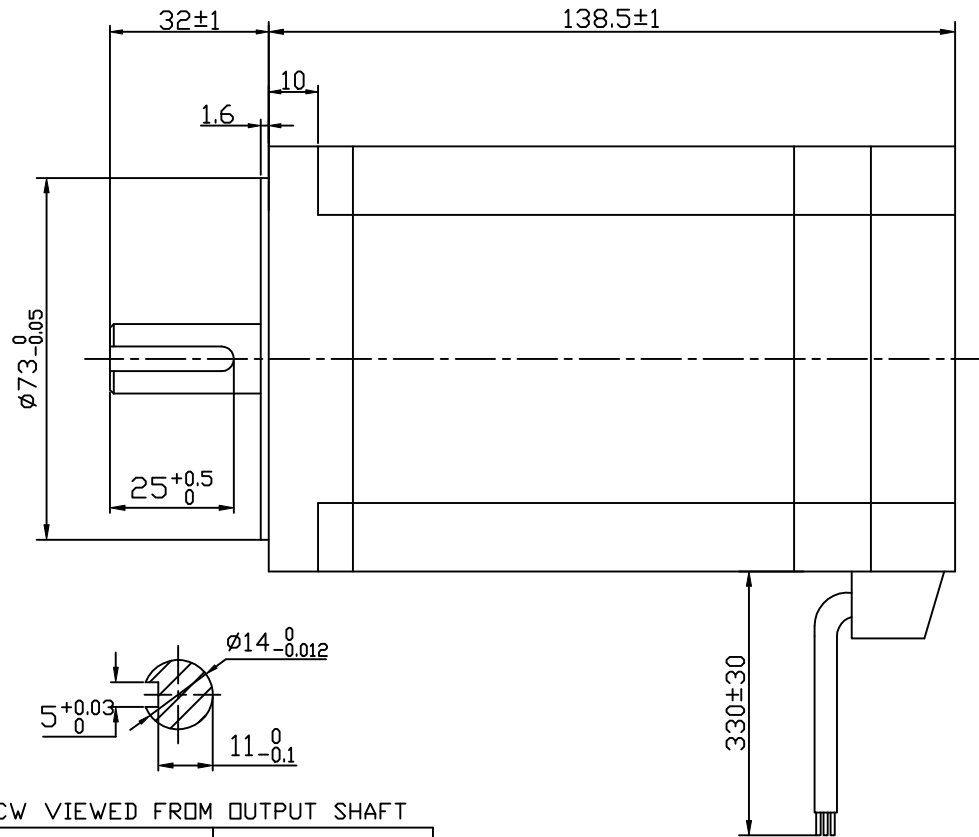
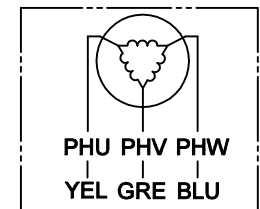
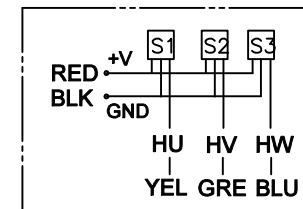


RevNo	Revision note	Date	Signature	Checked
B	根据客户要求, 前出轴上增加常规键槽	2022.06.05	ZY	
C	根据客户要求, 安装孔距改为 $\phi 6.5$	2022.11.10	ZY	

Dimension:
Unit=mm



Connection diagram:



Hall sensor cable
Note: hall sensor power supply
voltage +5 to +20VDC

Wiring cable

ROTATION: CW VIEWED FROM OUTPUT SHAFT

MANUFACTUER MODEL	KTC-86BLS125-22
NUMBER OF POLES	8
PHASE TO PHASE RESISTANCE	0.037 OHMS
NOMINAL VOLTAGE	24 VDC
NO LOAD SPEED	3700±10% RPM
NO LOAD CURRENT	4 Amps Max.
RATED TORQUE	2 N-m
RATED SPEED	3000±10% RPM
OUTPUT POWER	628 W
BACK EMF CONSTANT	4.1 V/kRPM
TORQUE CONSTANT	0.04 N-m/A
INSULATION CLASS	B

ELECTRICAL CONNECTION TABLE

+5V	RED	红	UL3266 26 AWG
HALL U	YEL	黄	
HALL V	GRE	绿	
HALL W	BLU	蓝	
GND	GND	黑	
PHASE U	YEL	黄	FF46-1 AF 2.5mm ²
PHASE V	GRE	绿	
PHASE W	BLU	蓝	

REV.	QTY.	No.	SIG.	DATE	Title:			WWW.KALATEC.COM.BR
DESIGN	ZY	22.11.10	STD.		Specification			
CHECK					CLS.MAK	WEIGHT	SCALE	
PROC.			APPR.		PAGE: 1/1			