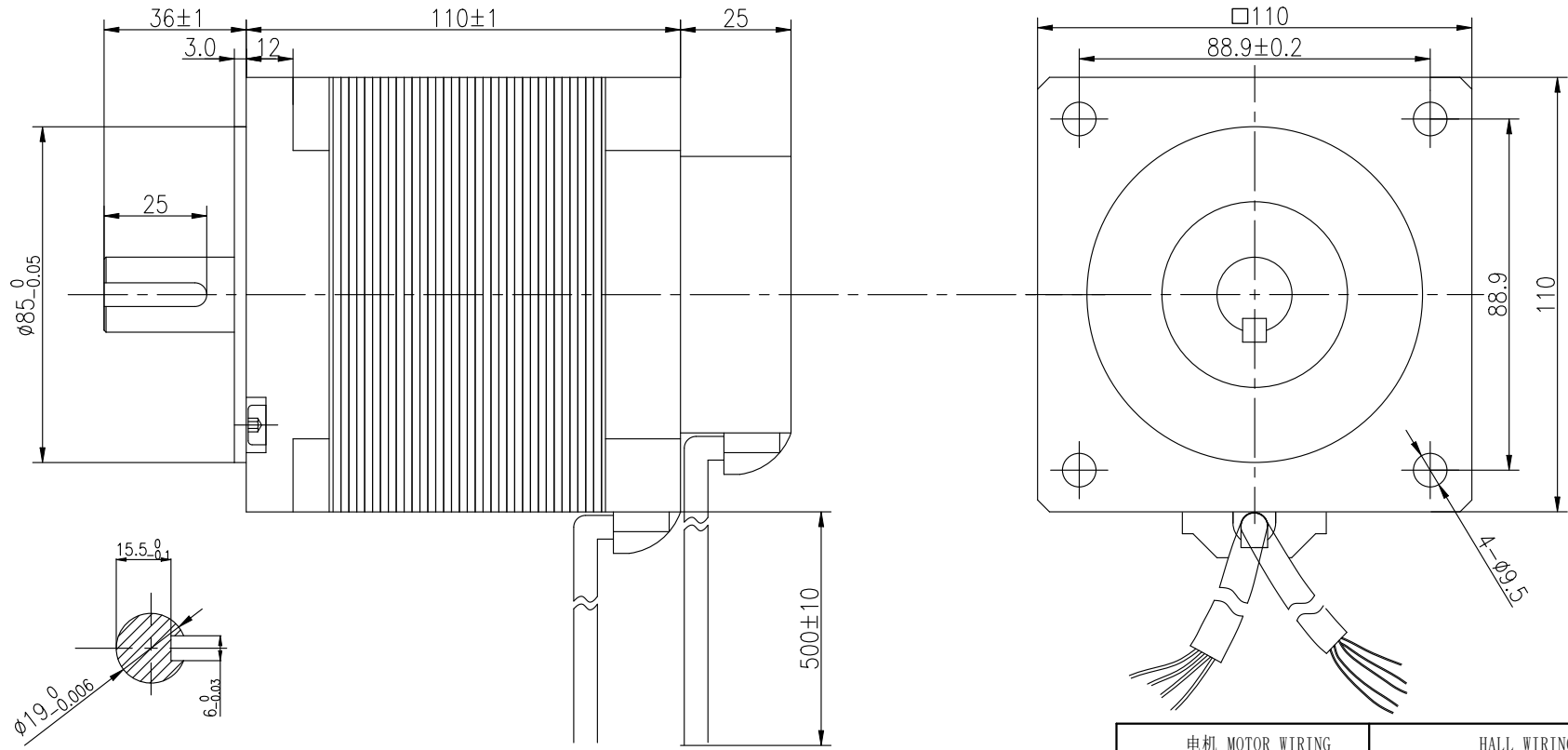


版本 REV.	位置 LOC.	变更号 ECN NO.	变更内容 REVISION RECORD	日期 DATE	设计 BY

BRUSHLESS DC MOTOR SPECIFICATION



电机 MOTOR WIRING			HALL WIRING				
U	V	W	+5V	A	B	C	GND
黄 YEL	绿 GRN	蓝 BLE	红 RED	黄 YEL	绿 GRN	蓝 BLE	黑 BLK
3*6mm ²			5*26AWG-0.2mm ²				

Specifications		
Rated voltage	48	DC
Rated power	1000	W
Number of Poles	8	
Number of phase	3	
Rated speed	3000	RPM
Maximum speed	4000±10%	RPM
Rated torque	3.2	N.m
Rated current	28	A
Back EMF	8.5±10%	V/KRPM
Rotor inertia	730	kg.mm ²
Motor weight	4.5	Kg
Insulation class	B	130° c
Protective enclosure rating	IP54	



CTQ Sign: Customer; Process; Law			名称 NAMES	签名 SIGNATURE	日期 DATE	名称 TITLE	BRUSHLESS MOTOR
物料符合RoHS指令要求 All Material are to be RoHS Compliant			设计 DESIGN			型号 MODEL	KTC-110BLDC110
UNLESS OTHERWISE SPECIFIED			标准化 STANDARD			图号 DWG.NO.	
单位 Unit:mm	<=6 ±0.1	2.常规公差Tolerances:	工艺 TECHNOLOGY			日期 DATE	2025.05.02
1.未注线性公差参照	>6~30 ±0.2	角度 Angles:±0.1°	审核 CHECK			材料 MATERIAL	
GB/T1804-m级	>30~120 ±0.3	倒角 Chamfer:±5°	批准 APPROVE			图幅 SIZE	版本 REV.
ISO 2768-1 class m	>120~400 ±0.5					页 SHEET	比例 SCALE
KALATEC AUTOMAÇÃO			METHOD	客户型号 CUSTOMER'S MODEL.NO.	版本 REV.		
			变更标识 ECN SIGN				